



2024 PERFORMANCE

NEW

RXP-X[®] RS 325

Race-ready performance watercraft, reimagined.

WHAT'S NEW

- ROTAX[®] 1630 ACE™ – 325 engine
- Hydraulic steering damper
- X-Performance features
- Carbon fiber hood
- Steering column

KEY FEATURES

- T3-R™ hull
- Launch control
- Ergolock™ R racing seat
- Low-rise racing handlebar
- Double-angled footwell wedges
- X-sponsons
- Polished impeller
- **Tech Package:** BRP Audio – Premium System and full color 7.8" wide display (optional)



- NEW Fiery Red *Premium*
- NEW Ice Metal and Manta Green

CAPACITY

Rider Capacity	2
Weight Capacity	182 kg
Fuel Capacity	70 L
Glove Box	9.7 L
Front Bin	143 L
Storage Capacity – Total	153.7 L

DIMENSIONS

Length (bumper to bumper)	331.8 cm
Width	125 cm
Height	111 cm

HULL

Type	T3-R Hull™
Material	Fiberglass

OTHER FEATURES

- iBR – Intelligent Brake & Reverse
- Extended VTST™ (Variable Trim System)
- RF D.E.S.S.™ key
- Watertight phone compartment
- LinQ[®] attachment system
- Wide-angle mirrors
- Round handle grips
- Footwell carpets
- Large swim platform
- Ski tow eye

ROTAX[®] ENGINE

1630 ACE™ – 325

Intake System	Supercharged with external intercooler
Displacement	1,630 cc
Cooling	Closed-Loop Cooling System (CLCS)
Reverse System	Electronic iBR [®] *
Fuel Type	98 octane
Throttle System	iTC™ (Intelligent Throttle Control)
Exhaust System	D-Sea-Bel™ system

GAUGE

Type of Gauge	Large panoramic 7.8" wide LCD display (w/audio) 7.6" wide digital display (w/o audio)
Main Functions	<ul style="list-style-type: none"> • BRP Connect (opt.) • Music (opt.) • Weather (opt.) • Bluetooth connectivity (opt.) • Speedometer • RPM • Clock • VTST™ • Fuel consumption (opt. w/ audio) • Fuel autonomy • Speed statistics • Vehicle hours
iTC System – Mode	<ul style="list-style-type: none"> • Sport mode • ECO[®] mode • Slow mode • Speed regulator • Launch control

WEIGHT

Dry Weight	353 kg 362 kg (w/ sound system)
------------	------------------------------------

WARRANTY

BRP limited warranty covers the watercraft for two years.

*Electronic brake, neutral and reverse.



NEW Fiery Red *Premium*



NEW Ice Metal and Manta Green

FEATURE HIGHLIGHTS



Rotax® 1630 ACE™ – 325 Engine

The Rotax 1630 ACE-325 is the world's most powerful PWC engine. With its 240 kW (325 hp), this engine delivers incredible acceleration and power thanks to innovative engineering for uncompromised offshore performance.



BRP Audio – Premium System (optional)

The industry's first manufacturer-installed truly waterproof Bluetooth[†] audio system.



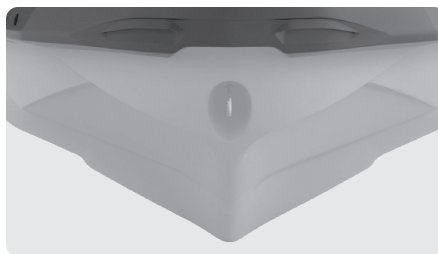
Full-Color 7.8" Wide Display (optional)

Full-color display with incredible visibility and a new level of functionality. Bluetooth and smartphone app integration provides music, weather, navigation and more.



Ergolock™ R System

A narrow seat profile with deep knee pockets and a revolutionary adjustable saddle that allows riders to lock in to the machine like never before.



T3-R Hull™

A deep-V design that offers unrivaled handling and acceleration and a new level of control at high speed.



Large Front Storage

An impressive 143 liters of sealed storage space allows riders to safely stow belongings while riding.

©2023 Bombardier Recreational Products Inc., (BRP). All rights reserved. ®, TM and the BRP logo are trademarks of Bombardier Recreational Products Inc. or its affiliates. All product comparisons, industry and market claims refer to new sit-down PWC with 4-stroke engines. Watercraft performance may vary depending on, among other things, general conditions, ambient temperature, altitude, riding ability and rider/passenger weight. Testing of competitive models done under identical conditions. Because of our ongoing commitment to product quality and innovation, BRP reserves the right at any time to discontinue or change specifications, price, design, features, models, or equipment without incurring any obligation. †Garmin is a trademark of Garmin Ltd. or its subsidiaries.