



2024 PERFORMANCE

NEW

# GTR™ -X RS 300

High performance and high value.

## WHAT'S NEW

- ROTAX® 1630 ACE™ – 300 engine
- Ergolock™ two-piece racing seat
- Low-rise handlebars
- Full-length angled footwell wedges

## KEY FEATURES

- GTI™ Hull
- Variable Trim System (VTS™)
- Large front storage
- Watertight phone compartment
- LinQ® attachment system

## CAPACITY

Rider Capacity	👤👤👤
Weight Capacity	272 kg
Fuel Capacity	70 L
Glove Box	8.8 L
Front Bin	152 L
Storage Capacity – Total	160.8 L

## DIMENSIONS

Length (bumper to bumper)	331.8 cm
Width	125 cm
Height	110 cm

## HULL

Type	GTI™ Hull
Material	Polytec™ Gen 2

## OTHER FEATURES

- Seat strap
- iBR – Intelligent Brake & Reverse
- RF D.E.S.S.™ key
- Wide-angle mirrors
- Handle grips with palm rest
- Footwell carpets
- Large swim platform
- Tow hook



NEW Eclipse Black and Deep Marsala

ROTAX® ENGINE	1630 ACE™ – 300
Intake System	Supercharged with external intercooler
Displacement	1,630 cc
Cooling	Closed-Loop Cooling System (CLCS)
Reverse System	Electronic iBR**
Fuel Type	95 octane
Throttle System	iTC™ (Intelligent Throttle Control)
Exhaust System	D-Sea-Bel™ system

## GAUGE

Type of Gauge	7.6" wide digital display	
Main Functions	<ul style="list-style-type: none"> <li>• BRP Connect (opt.)</li> <li>• Music (opt.)</li> <li>• Weather (opt.)</li> <li>• Bluetooth connectivity (opt.)</li> <li>• Speedometer</li> <li>• RPM</li> </ul>	<ul style="list-style-type: none"> <li>• Clock</li> <li>• VTS™</li> <li>• Fuel consumption (opt. w/ audio)</li> <li>• Fuel autonomy</li> <li>• Vehicle hours</li> </ul>
iTC System – Mode	<ul style="list-style-type: none"> <li>• Sport mode</li> <li>• ECO® mode</li> </ul>	<ul style="list-style-type: none"> <li>• Slow mode</li> <li>• Speed regulator</li> <li>• Launch control</li> </ul>

## WEIGHT

Dry Weight	360 kg
------------	--------

## WARRANTY

BRP limited warranty covers the watercraft for two years.

\*\*Electronic brake, neutral and reverse.





## FEATURE HIGHLIGHTS



### Rotax® 1630 ACE™ – 300 Engine

The powerful Rotax® 1630 ACE™ – 300 engine levels up your performance to your liking by delivering high efficiency and a world-class acceleration.



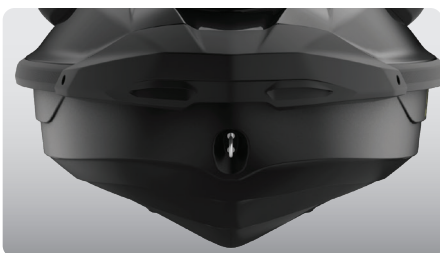
### Ergolock™ Two-Piece Racing Seat

Tacky surface, back support enhances grip during aggressive riding.



### Low-Rise Handlebars

Creates a more streamlined, race oriented riding position.



### GTI™ Hull

This moderate V-shaped hull guarantees a stable, enjoyable ride in variable water conditions. Confident, predictable handling but incredibly playful when you want it to be.



### Angled Footwell Wedges

Lined with premium carpets, provides superior foot grip.

