



2024 SPORT FISHING

# FISHPRO™ SPORT 170

The original game changer. Find yourself a new perspective on sport fishing.

## KEY FEATURES

- Rotax® 1630 ACE™ – 170
- ST3 Hull™
- iDF – Intelligent Debris-Free Pump System
- Garmin® 7" GPS & fish finder
- 5 fishing rod holders
- Rear Deck Extension with LinQ®
- LinQ fishing cooler (51 L)
- Angled gunwale footrests
- Direct access front storage with bin organizer



White and Gulfstream Blue

## CAPACITY

Rider Capacity	👤👤👤
Weight Capacity	272 kg
Rear Platform Capacity (without passenger)	100 kg
Fuel Capacity	70 L
Glove Box	2.9 L
Front Bin	96 L
LinQ Fishing Cooler	51 L
Storage Capacity – Total	149.9 L

## DIMENSIONS

Length (bumper to bumper)	373 cm
Width	125 cm
Height	115 cm

## HULL

Type	ST3 Hull™
Material	Fiberglass

## OTHER FEATURES

- Ergolock™ two-piece fishing seat
- Seat strap
- iBR – Intelligent Brake & Reverse
- VTS™ (Variable Trim System)
- Boarding ladder
- RF D.E.S.S.™ key
- Watertight phone compartment
- Wide-angle mirrors
- Handle grips with palm rest
- Footwell carpets
- Large swim platform
- 2 LinQ front supports
- Cup holder
- USB port
- Tilt steering
- Ski tow eye

## ROTAX® ENGINE

1630 ACE™ – 170

Intake System	Naturally aspirated
Displacement	1,630 cc
Cooling	Closed-Loop Cooling System (CLCS)
Reverse System	Electronic iBR®*
Fuel Type	95 octane
Throttle System	iTC™ (Intelligent Throttle Control)
Exhaust System	D-Sea-Bel™ system

## GAUGE

Type of Gauge	7.6" wide digital display	
Main Functions	• Speedometer	• Fuel autonomy
	• RPM	• Water temperature
iTC System – Mode	• Clock	• Speed statistics (opt. w/ audio)
	• VTS™	• Vehicle hours
iTC System – Mode	• Sport mode	• Trolling mode (slow mode)
	• ECO® mode	• Speed regulator

## WEIGHT

Dry Weight	386 kg
------------	--------

## WARRANTY

BRP limited warranty covers the watercraft for two years.

\*Electronic brake, neutral and reverse.





## FEATURE HIGHLIGHTS



### iDF – Intelligent Debris-Free Pump System

An innovative, industry-first system that allows you to free your pump of weeds and debris with intuitive handlebar-activated controls.



### Garmin® 6" GPS & Fish Finder

A top-of-the-line navigation, charting and fish-finding system using an in-hull transducer and mid-CHIRP sonar. Includes token for access to free upgraded regional maps.



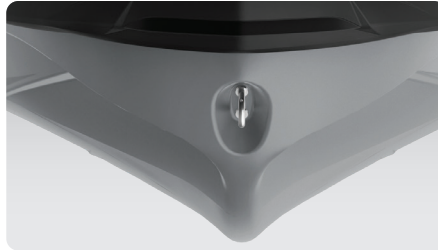
### Angled Gunwale Footrests

Ensures an ergonomic and secure posture while fishing from a side position.



### Rotax® 1630 ACE™ – 170 Engine

The Rotax® 1630 ACE™ – 170 combines plenty of naturally aspirated power and economy, meaning the adventure can be exhilarating and prolonged.



### ST3 Hull™

An innovative hull that sets the benchmark for rough water handling, stability, and offshore performance.



### Rear Deck Extension With LinQ

Adds 11.5 inches to the back of the watercraft to increase onboard space, storage capability and stability. Two LinQ attachment points included.

©2023 Bombardier Recreational Products Inc., (BRP). All rights reserved. ®, TM and the BRP logo are trademarks of Bombardier Recreational Products Inc. or its affiliates. All product comparisons, industry and market claims refer to new sit-down PWC with 4-stroke engines. Watercraft performance may vary depending on, among other things, general conditions, ambient temperature, altitude, riding ability and rider/passenger weight. Testing of competitive models done under identical conditions. Because of our ongoing commitment to product quality and innovation, BRP reserves the right at any time to discontinue or change specifications, price, design, features, models, or equipment without incurring any obligation. †Garmin is a trademark of Garmin Ltd. or its subsidiaries.